

# Labeling Homeostasis Systems

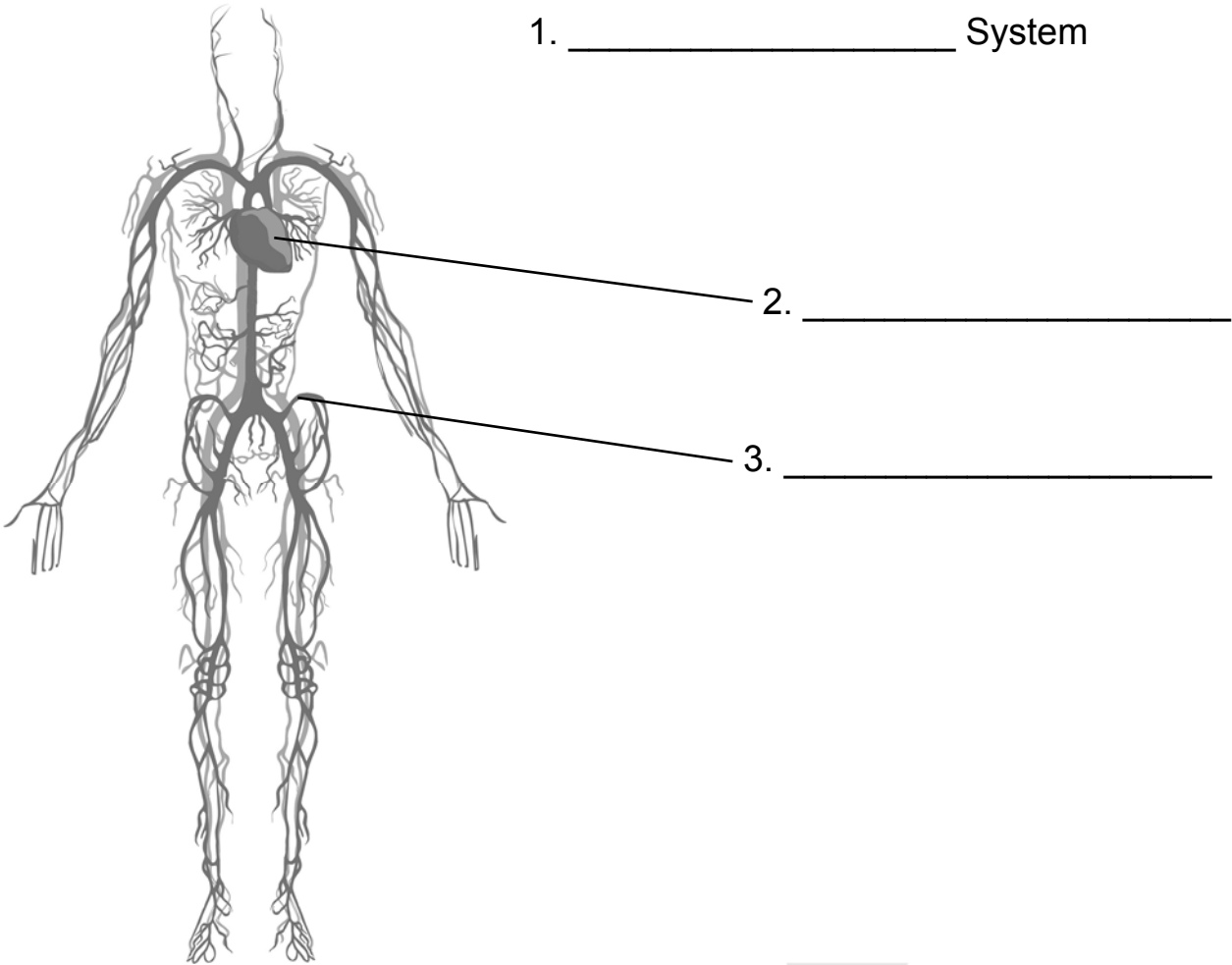
*Directions:*

1. Using the provided word bank below, label the seven body systems diagrams on the following pages.
2. Use the remaining words in the word bank to label the major body parts in each system.

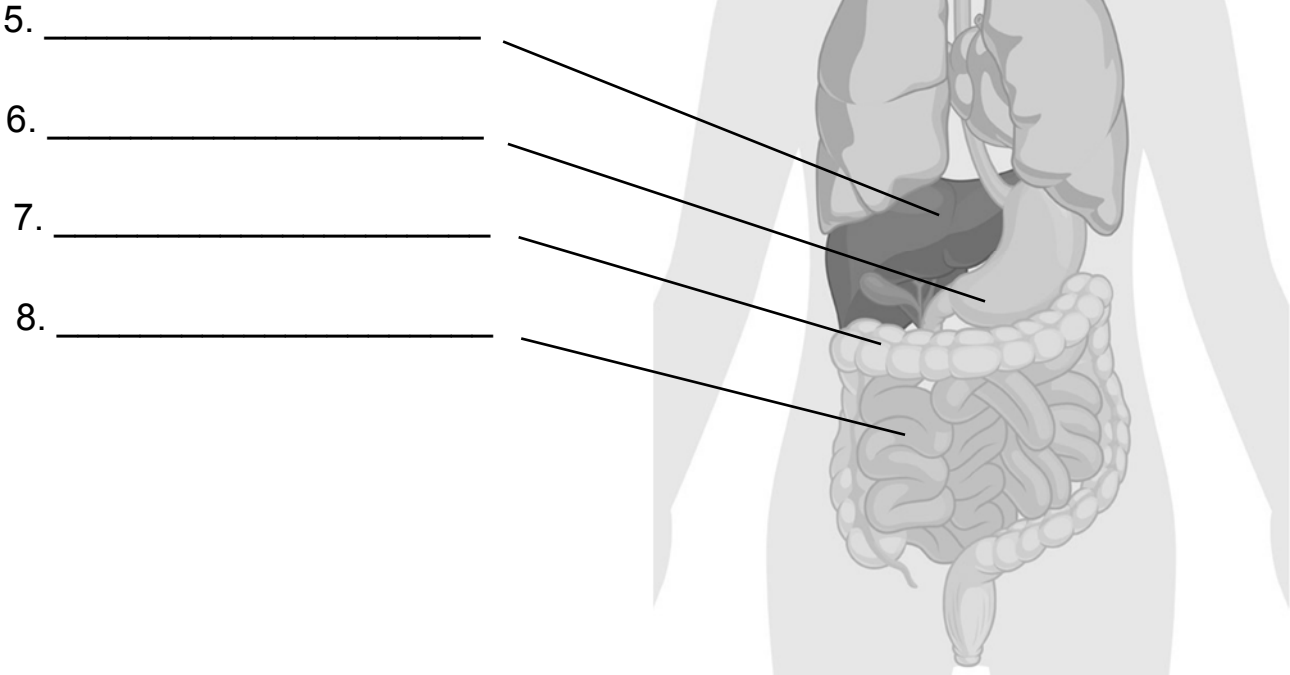
## Word Bank

Nervous	Circulatory
Spleen	Lymphatic
Stomach	Liver
Endocrine	Lymph node
Thymus gland	Respiratory
Small intestine	Thyroid gland
Large intestine	Digestive
Nerves	Spinal cord
Integumentary	Heart
Lymphatic	Hypothalamus
Blood vessel	Brain
Pituitary gland	Bone marrow
Lungs	Diaphragm

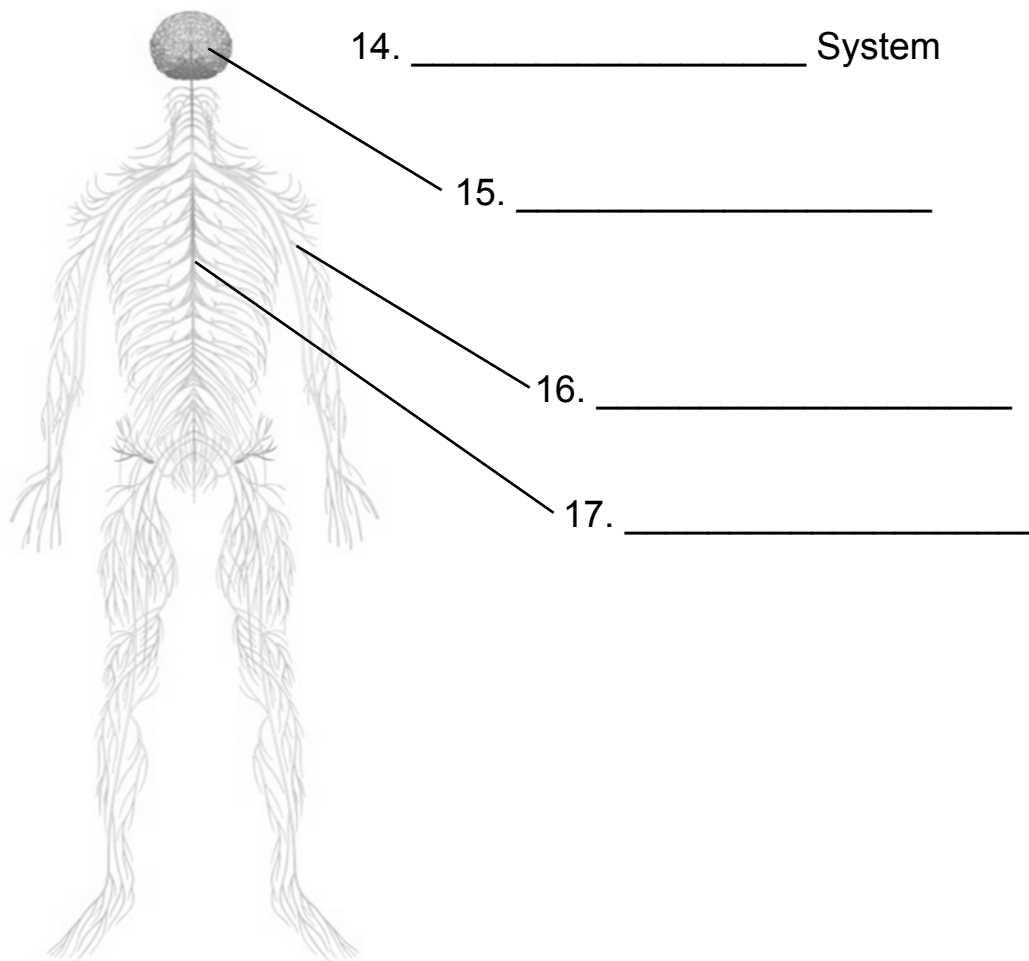
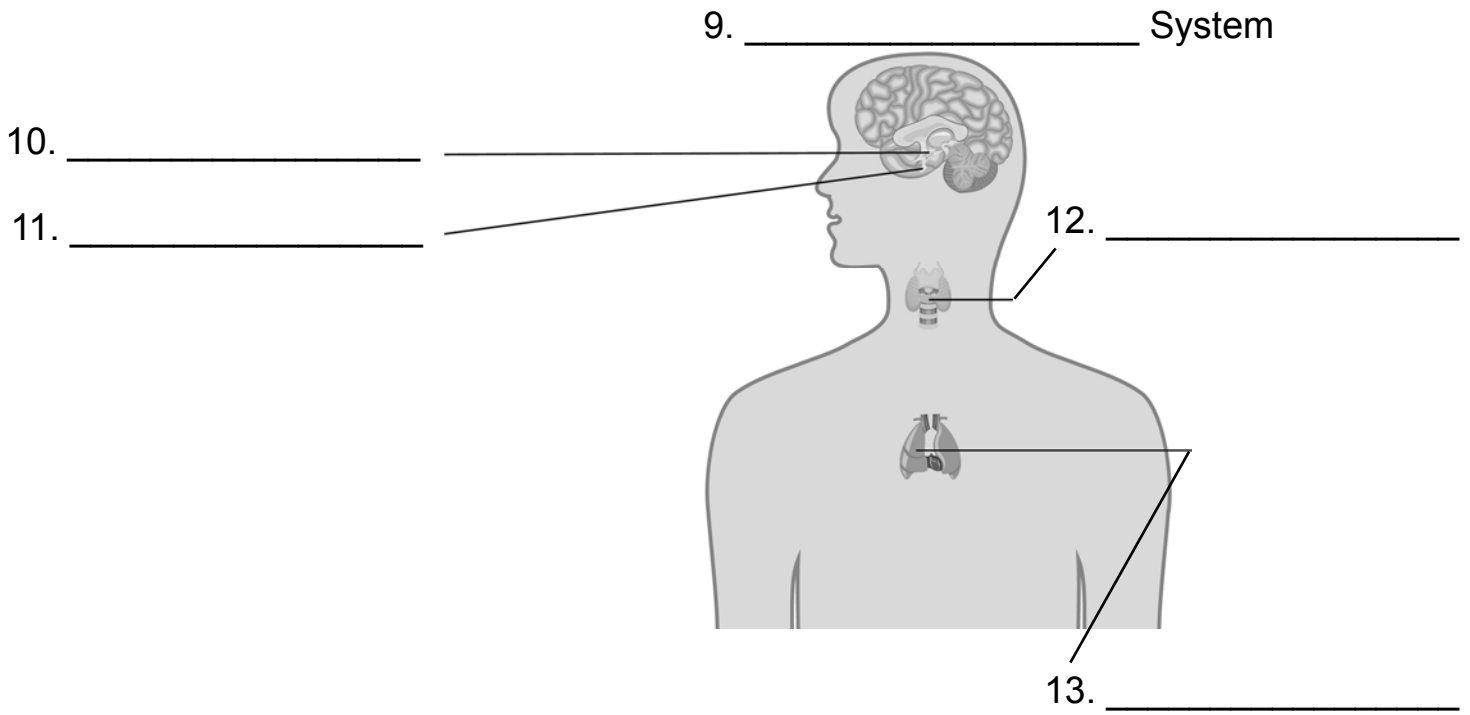
# Labeling Homeostasis Systems



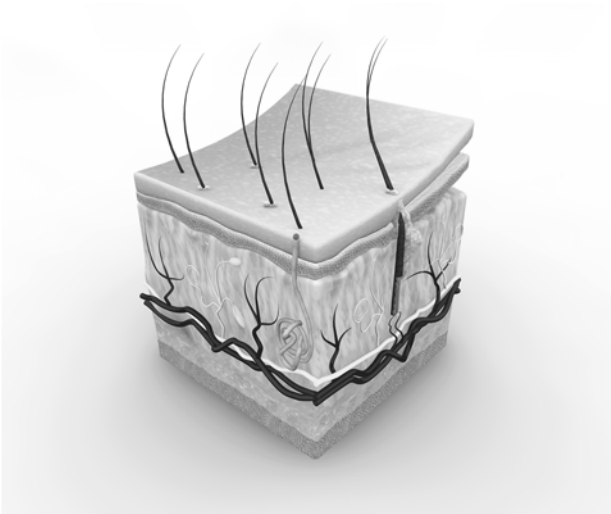
4. \_\_\_\_\_ System



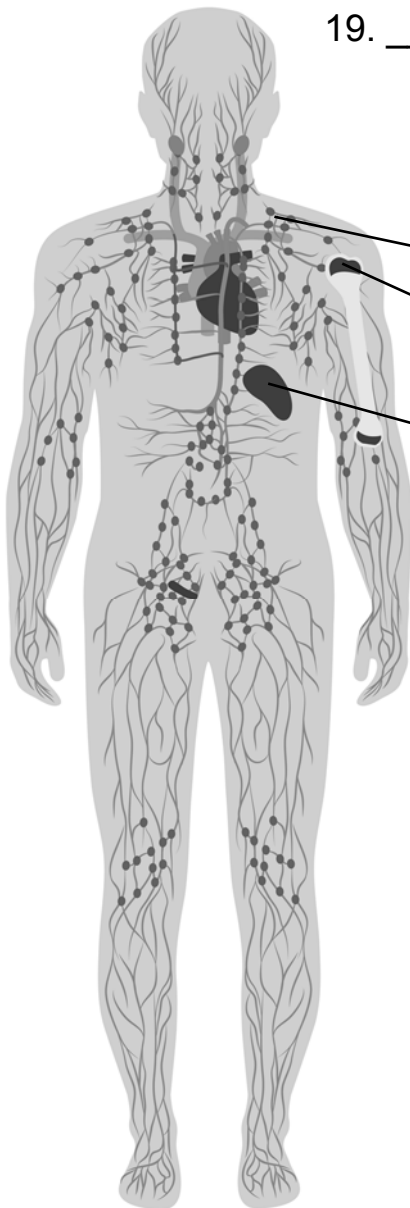
# Labeling Homeostasis Systems



# Labeling Homeostasis Systems



18. \_\_\_\_\_ System



19. \_\_\_\_\_ System

20. \_\_\_\_\_

21. \_\_\_\_\_

22. \_\_\_\_\_

23. \_\_\_\_\_ System

24. \_\_\_\_\_

25. \_\_\_\_\_

